

# REPLAT OF LOXAHATCHEE DISTRICT SUBDIVISION LOXAHATCHEE GROVES

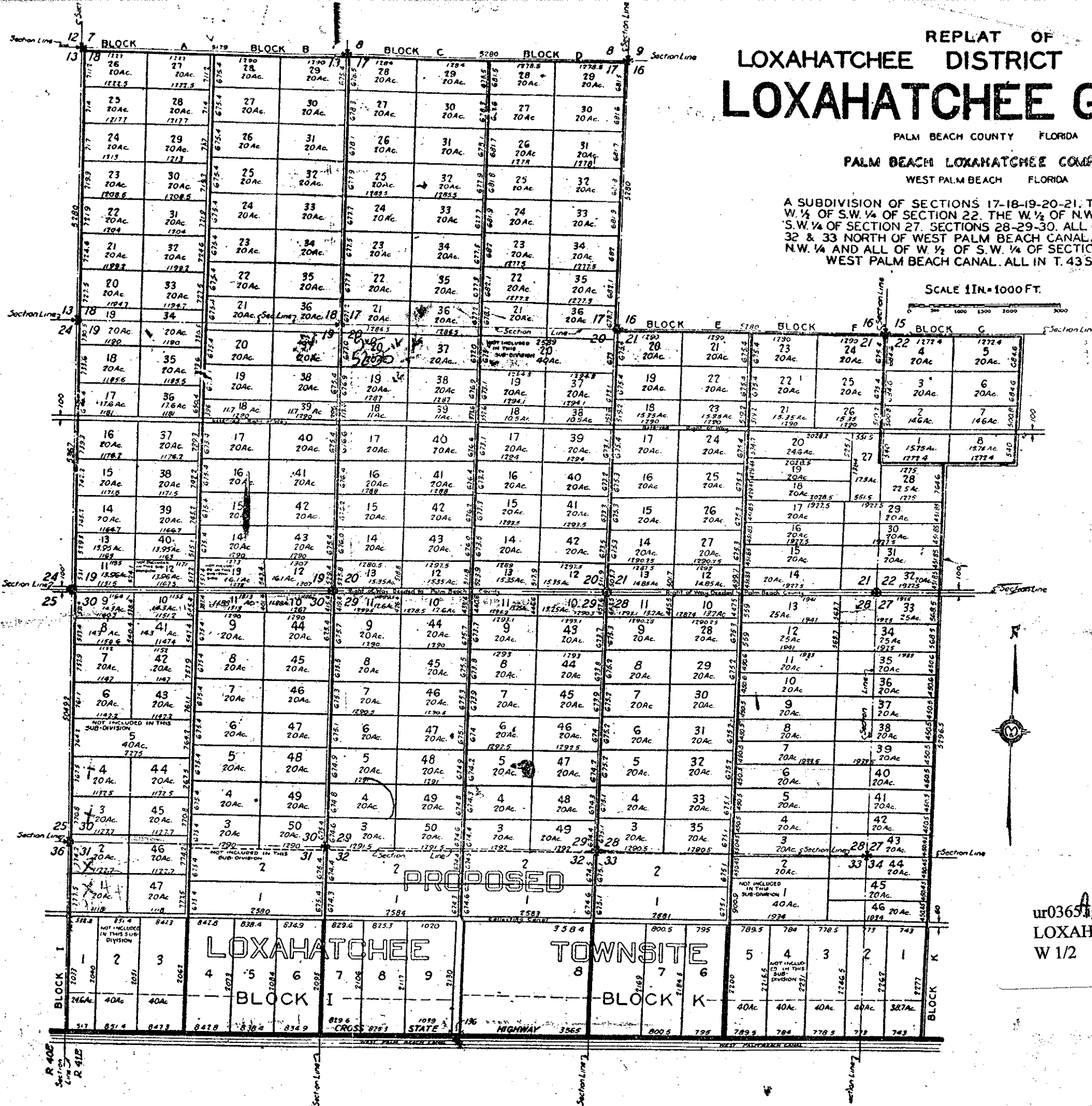
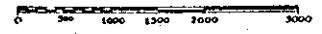
PALM BEACH COUNTY FLORIDA

PALM BEACH LOXAHATCHEE COMPANY

WEST PALM BEACH FLORIDA

A SUBDIVISION OF SECTIONS 17-18-19-20-21, THE N.W. 1/4 AND W. 1/2 OF S.W. 1/4 OF SECTION 22, THE W. 1/2 OF N.W. 1/4 AND W. 1/2 OF S.W. 1/4 OF SECTION 27, SECTIONS 28-29-30, ALL OF SECTIONS 31-32 & 33 NORTH OF WEST PALM BEACH CANAL, THE W. 1/2 OF N.W. 1/4 AND ALL OF W. 1/2 OF S.W. 1/4 OF SECTION 34 NORTH OF WEST PALM BEACH CANAL, ALL IN T. 43S. - R. 41E

SCALE 1IN=1000FT.



ATLANTIC TITLE & GUARANTY COMPANY, WEST PALM BEACH, FLA.

ur03651gr  
LOXAHATCHEE GROVES TR 29 BK C  
W 1/2